

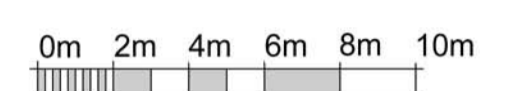
The use of this data by the recipient acts as an agreement of the following statements. Do not use this data if you do not agree with any of the following statements:-

All drawings are based upon site information supplied by third parties and as such their accuracy cannot be guaranteed. All features are approximate and subject to clarification by a detailed topographical survey, statutory service enquiries and confirmation of the legal boundaries.

The controlled version of this drawing should be viewed in DWF or PDF format not DWG or other formats.

Where this drawing has been based upon Ordnance Survey data, it has been reproduced under the terms of Ryder Licence No. 100000144. Reproduction of this drawing in whole or in part is prohibited without the prior permission of Ordnance Survey.

Do not scale the drawing. Use figured dimensions in all cases. Check all dimensions on site. Report any discrepancies in writing to Ryder before proceeding.

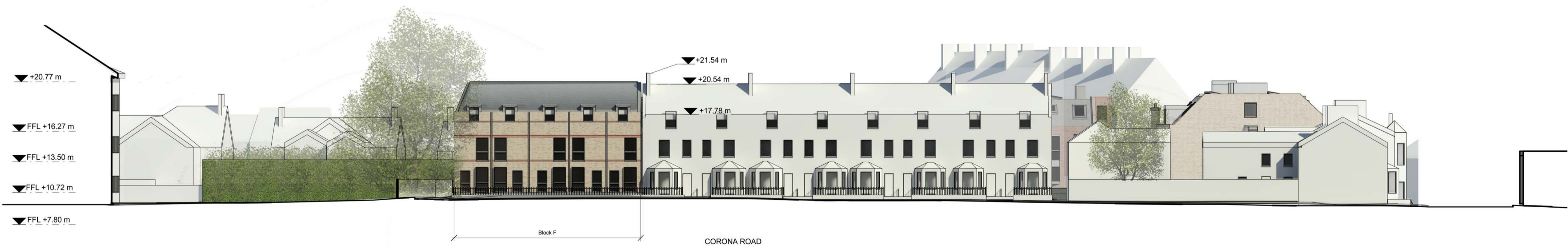


VISUAL SCALE 1:200 @ A1



East Elevation_Milton Road

1:200



West Elevation_Corona Road

1:200

Revision	Date	Drawn By
31	02.06.14	RBe

Revision	Date	Drawn By
30	04.04.14	MMo

Amendment
 Status
Preliminary
 Project
Merchant Place Developments
1 Milton Road
Cambridge
 Drawing
Site Elevations East & West

Project No. 2631	Drawing No. 150-02-Rev31
Scale at A1 As indicated	Drawn By MMo